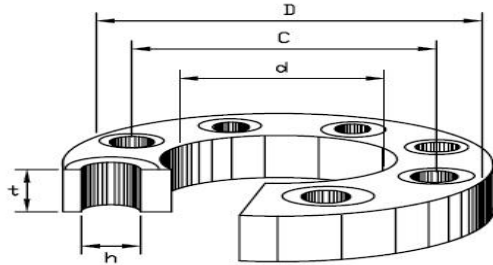
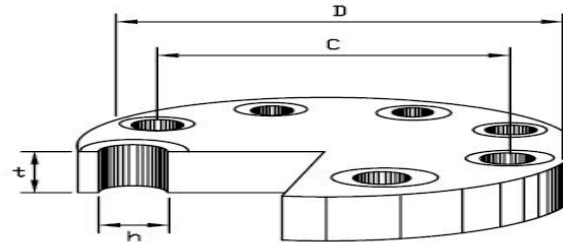


## JIS B2220 FLANGES DIMENSIONS

Type 1



Type 2



**JIS 5 kgf/cm<sup>2</sup>**

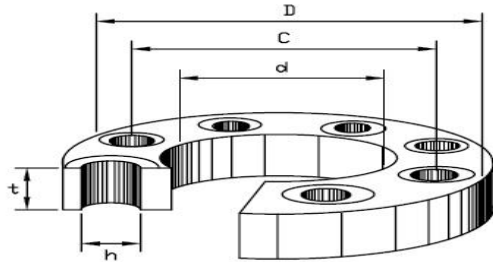
| Size<br>mm | d     | D   | C   | No. | h  | t  | Weight (kg) |        |
|------------|-------|-----|-----|-----|----|----|-------------|--------|
|            |       |     |     |     |    |    | Type 1      | Type 2 |
| 10         | 17.8  | 75  | 55  | 4   | 12 | 9  | 0.27        | 0.30   |
| 15         | 22.2  | 80  | 60  | 4   | 12 | 9  | 0.30        | 0.40   |
| 20         | 27.7  | 85  | 65  | 4   | 12 | 10 | 0.37        | 0.50   |
| 25         | 34.5  | 95  | 75  | 4   | 12 | 10 | 0.45        | 0.60   |
| 32         | 43.2  | 115 | 90  | 4   | 15 | 12 | 0.78        | 0.90   |
| 40         | 49.1  | 120 | 95  | 4   | 15 | 12 | 0.83        | 1.00   |
| 50         | 61.1  | 130 | 105 | 4   | 15 | 14 | 1.07        | 1.40   |
| 65         | 77.1  | 155 | 130 | 4   | 15 | 14 | 1.49        | 2.00   |
| 80         | 90.0  | 180 | 145 | 4   | 19 | 14 | 1.99        | 2.70   |
| 90         | 102.6 | 190 | 155 | 4   | 19 | 14 | 2.09        | 3.00   |
| 100        | 115.4 | 200 | 165 | 8   | 19 | 16 | 2.39        | 3.70   |
| 125        | 141.2 | 235 | 200 | 8   | 19 | 16 | 3.23        | 5.20   |
| 150        | 166.6 | 265 | 230 | 8   | 19 | 18 | 4.41        | 7.50   |
| 175        | 192.1 | 300 | 260 | 8   | 23 | 18 | 5.51        | 9.50   |
| 200        | 218.0 | 320 | 280 | 8   | 23 | 20 | 6.33        | 12.20  |
| 250        | 269.5 | 385 | 345 | 12  | 23 | 22 | 9.45        | 19.30  |
| 300        | 321.0 | 430 | 390 | 12  | 23 | 22 | 10.30       | 24.30  |
| 350        | 358.1 | 480 | 435 | 12  | 25 | 24 | 14.00       | 33.20  |

**JIS 10 kgf/cm<sup>2</sup>**

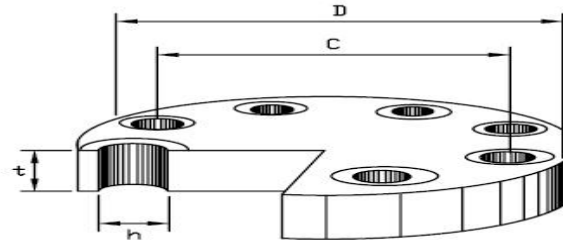
| Size<br>mm | d     | D   | C   | No. | h  | t  | Weight (kg) |        |
|------------|-------|-----|-----|-----|----|----|-------------|--------|
|            |       |     |     |     |    |    | Type 1      | Type 2 |
| 10         | 17.8  | 90  | 65  | 4   | 15 | 12 | 0.52        | 0.54   |
| 15         | 22.2  | 95  | 70  | 4   | 15 | 12 | 0.57        | 0.61   |
| 20         | 27.7  | 100 | 75  | 4   | 15 | 14 | 0.73        | 0.79   |
| 25         | 34.5  | 125 | 90  | 4   | 19 | 14 | 1.13        | 1.24   |
| 32         | 43.2  | 135 | 100 | 4   | 19 | 16 | 1.48        | 1.66   |
| 40         | 49.1  | 140 | 105 | 4   | 19 | 16 | 1.56        | 1.81   |
| 50         | 61.1  | 155 | 120 | 4   | 19 | 16 | 1.88        | 2.23   |
| 65         | 77.1  | 175 | 140 | 4   | 19 | 18 | 2.60        | 3.24   |
| 80         | 90.0  | 185 | 150 | 8   | 19 | 18 | 2.61        | 3.50   |
| 90         | 102.6 | 195 | 160 | 8   | 19 | 18 | 2.76        | 4.00   |
| 100        | 115.4 | 210 | 175 | 8   | 19 | 18 | 3.14        | 4.60   |
| 125        | 141.2 | 250 | 210 | 8   | 23 | 20 | 4.77        | 7.30   |
| 150        | 166.6 | 280 | 240 | 8   | 23 | 22 | 6.34        | 10.10  |
| 175        | 192.1 | 302 | 265 | 12  | 23 | 22 | 6.82        | 11.80  |
| 200        | 218.0 | 330 | 290 | 12  | 23 | 22 | 7.53        | 14.00  |
| 250        | 269.5 | 400 | 355 | 12  | 25 | 24 | 11.80       | 22.70  |
| 300        | 321.0 | 445 | 400 | 16  | 25 | 24 | 13.50       | 29.50  |
| 350        | 358.1 | 490 | 445 | 16  | 25 | 26 | 16.40       | 37.10  |

## JIS B2220 FLANGES DIMENSIONS

Type 1



Type 2



### JIS 5 kgf/cm<sup>2</sup>

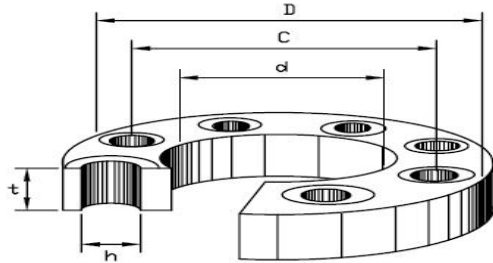
| Size<br>mm | d      | D    | C    | No. | h  | t  | Weight (kg) |        |
|------------|--------|------|------|-----|----|----|-------------|--------|
|            |        |      |      |     |    |    | Type 1      | Type 2 |
| 400        | 409.0  | 540  | 495  | 16  | 25 | 24 | 16.90       | 41.90  |
| 450        | 460.0  | 605  | 555  | 16  | 25 | 24 | 21.60       | 53.00  |
| 500        | 511.0  | 655  | 605  | 20  | 25 | 24 | 23.10       | 61.90  |
| 550        | 562.0  | 720  | 665  | 20  | 27 | 26 | 30.30       | 81.20  |
| 600        | 613.0  | 770  | 715  | 20  | 27 | 26 | 32.70       | 93.20  |
| 650        | 664.0  | 825  | 770  | 24  | 27 | 26 | 35.90       | 106.90 |
| 700        | 715.0  | 875  | 820  | 24  | 27 | 26 | 38.20       | 120.60 |
| 750        | 766.0  | 945  | 880  | 24  | 33 | 28 | 48.70       | 150.50 |
| 800        | 817.0  | 995  | 930  | 24  | 33 | 28 | 51.60       | 167.40 |
| 900        | 919.0  | 1095 | 1030 | 24  | 33 | 30 | 61.10       | 218.10 |
| 1000       | 1021.0 | 1195 | 1130 | 28  | 33 | 32 | 70.50       | 277.30 |

### JIS 10 kgf/cm<sup>2</sup>

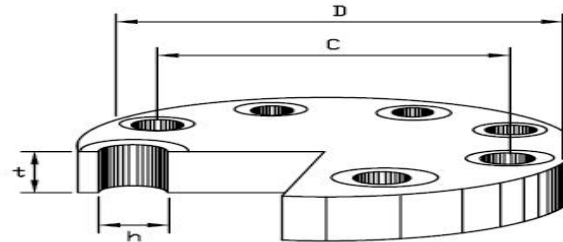
| Size<br>mm | d      | D    | C    | No. | h  | t  | Weight (kg) |        |
|------------|--------|------|------|-----|----|----|-------------|--------|
|            |        |      |      |     |    |    | Type 1      | Type 2 |
| 400        | 409.0  | 560  | 510  | 16  | 27 | 28 | 23.00       | 52.50  |
| 450        | 460.0  | 620  | 565  | 20  | 27 | 30 | 29.50       | 68.80  |
| 500        | 511.0  | 675  | 620  | 20  | 27 | 30 | 33.50       | 82.10  |
| 550        | 562.0  | 745  | 680  | 20  | 33 | 32 | 43.10       | 105.80 |
| 600        | 613.0  | 795  | 730  | 24  | 33 | 32 | 45.70       | 120.20 |
| 650        | 664.0  | 845  | 780  | 24  | 33 | 34 | 52.10       | 145.00 |
| 700        | 715.0  | 905  | 840  | 24  | 33 | 34 | 59.50       | 167.20 |
| 750        | 766.0  | 970  | 900  | 24  | 33 | 36 | 73.20       | 204.20 |
| 800        | 817.0  | 1020 | 950  | 28  | 33 | 36 | 76.40       | 225.20 |
| 900        | 919.0  | 1120 | 1050 | 28  | 33 | 38 | 89.40       | 288.40 |
| 1000       | 1021.0 | 1235 | 1160 | 28  | 39 | 40 | 109.20      | 367.70 |

## JIS B2220 FLANGES DIMENSIONS

Type 1



Type 2



**JIS 16 kgf/cm<sup>2</sup>**

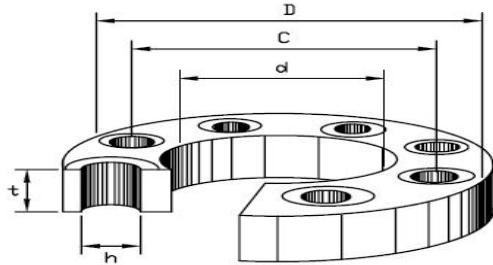
| Size<br>mm | d     | D   | C   | No. | h  | t  | Weight (kg) |        |
|------------|-------|-----|-----|-----|----|----|-------------|--------|
|            |       |     |     |     |    |    | Type 1      | Type 2 |
| 10         | 17.8  | 90  | 65  | 4   | 15 | 12 | 0.51        | 0.53   |
| 15         | 22.2  | 95  | 70  | 4   | 15 | 12 | 0.56        | 0.60   |
| 20         | 27.7  | 100 | 75  | 4   | 15 | 14 | 0.72        | 0.79   |
| 25         | 34.5  | 125 | 90  | 4   | 19 | 14 | 1.13        | 1.23   |
| 32         | 43.2  | 135 | 100 | 4   | 19 | 16 | 1.46        | 1.66   |
| 40         | 49.1  | 140 | 105 | 4   | 19 | 16 | 1.56        | 1.81   |
| 50         | 61.1  | 155 | 120 | 8   | 19 | 16 | 1.70        | 2.10   |
| 65         | 77.1  | 175 | 140 | 8   | 19 | 18 | 2.40        | 3.10   |
| 80         | 90.0  | 200 | 160 | 8   | 23 | 20 | 3.50        | 4.50   |
| 90         | 102.6 | 210 | 170 | 8   | 23 | 20 | 3.70        | 5.00   |
| 100        | 115.4 | 225 | 185 | 8   | 23 | 22 | 4.50        | 6.30   |
| 125        | 141.2 | 270 | 225 | 8   | 25 | 22 | 6.50        | 9.20   |
| 150        | 166.6 | 305 | 260 | 12  | 25 | 24 | 8.70        | 12.80  |
| 175        | -     | -   | -   | -   | -  | -  | -           | -      |
| 200        | 218.0 | 350 | 305 | 12  | 25 | 26 | 10.90       | 18.60  |
| 250        | 269.5 | 430 | 380 | 12  | 27 | 28 | 18.00       | 30.60  |
| 300        | 321.0 | 480 | 430 | 16  | 27 | 30 | 21.50       | 40.70  |
| 350        | 358.1 | 540 | 480 | 16  | 33 | 34 | 30.80       | 57.80  |

**JIS 20 kgf/cm<sup>2</sup>**

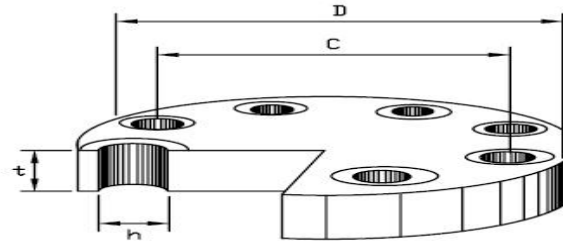
| Size<br>mm | d     | D   | C   | No. | h  | t  | Weight (kg) |        |
|------------|-------|-----|-----|-----|----|----|-------------|--------|
|            |       |     |     |     |    |    | Type 1      | Type 2 |
| 10         | 17.8  | 90  | 65  | 4   | 15 | 14 | 0.60        | 0.60   |
| 15         | 22.2  | 95  | 70  | 4   | 15 | 14 | 0.70        | 0.70   |
| 20         | 27.7  | 100 | 75  | 4   | 15 | 16 | 0.80        | 0.90   |
| 25         | 34.5  | 125 | 90  | 4   | 19 | 16 | 1.30        | 1.50   |
| 32         | 43.2  | 135 | 100 | 4   | 19 | 18 | 1.60        | 1.80   |
| 40         | 49.1  | 140 | 105 | 4   | 19 | 18 | 1.70        | 2.00   |
| 50         | 61.1  | 155 | 120 | 8   | 19 | 18 | 1.90        | 2.40   |
| 65         | 77.1  | 175 | 140 | 8   | 19 | 20 | 2.60        | 3.40   |
| 80         | 90.0  | 200 | 160 | 8   | 23 | 22 | 3.80        | 4.90   |
| 90         | 102.6 | 210 | 170 | 8   | 23 | 24 | 4.40        | 6.00   |
| 100        | 115.4 | 225 | 185 | 8   | 23 | 24 | 4.90        | 6.90   |
| 125        | 141.2 | 270 | 225 | 8   | 25 | 26 | 7.80        | 11.00  |
| 150        | 166.6 | 305 | 260 | 12  | 25 | 28 | 10.10       | 14.90  |
| 175        | -     | -   | -   | -   | -  | -  | -           | -      |
| 200        | 218.0 | 350 | 305 | 12  | 25 | 30 | 12.60       | 21.40  |
| 250        | 269.5 | 430 | 380 | 12  | 27 | 34 | 21.90       | 37.20  |
| 300        | 321.0 | 480 | 430 | 16  | 27 | 36 | 25.80       | 48.80  |
| 350        | 358.1 | 540 | 480 | 16  | 33 | 40 | 36.20       | 68.00  |

## JIS B2220 FLANGES DIMENSIONS

Type 1



Type 2



### JIS 16 kgf/cm<sup>2</sup>

| Size<br>mm | d      | D    | C    | No. | h  | t  | Weight (kg) |        |
|------------|--------|------|------|-----|----|----|-------------|--------|
|            |        |      |      |     |    |    | Type 1      | Type 2 |
| 400        | 409.0  | 605  | 540  | 16  | 33 | 38 | 42.80       | 82.20  |
| 450        | 460.0  | 675  | 605  | 20  | 33 | 40 | 55.10       | 107.60 |
| 500        | 511.0  | 730  | 660  | 20  | 33 | 42 | 65.10       | 133.10 |
| 550        | 562.0  | 795  | 720  | 20  | 39 | 44 | 77.90       | 164.10 |
| 600        | 613.0  | 845  | 770  | 24  | 39 | 46 | 86.00       | 193.20 |
| 650        | 664.0  | 895  | 820  | 24  | 39 | 48 | 96.30       | 227.50 |
| 700        | 715.0  | 960  | 875  | 24  | 42 | 50 | 114.10      | 272.60 |
| 750        | 766.0  | 1020 | 935  | 24  | 42 | 52 | 132.70      | 321.90 |
| 800        | 817.0  | 1085 | 990  | 24  | 48 | 54 | 152.10      | 375.60 |
| 900        | 919.0  | 1185 | 1090 | 28  | 48 | 58 | 178.10      | 481.80 |
| 1000       | 1021.0 | 1320 | 1210 | 28  | 56 | 62 | 235.30      | 636.00 |

### JIS 20 kgf/cm<sup>2</sup>

| Size<br>mm | d     | D    | C    | No. | h  | t  | Weight (kg) |        |
|------------|-------|------|------|-----|----|----|-------------|--------|
|            |       |      |      |     |    |    | Type 1      | Type 2 |
| 400        | 409.0 | 605  | 540  | 16  | 33 | 46 | 51.70       | 99.40  |
| 450        | 460.0 | 675  | 605  | 20  | 33 | 48 | 66.10       | 129.10 |
| 500        | 511.0 | 730  | 660  | 20  | 33 | 50 | 77.40       | 158.40 |
| 550        | 562.0 | 795  | 720  | 20  | 39 | 52 | 92.20       | 194.00 |
| 600        | 613.0 | 845  | 770  | 24  | 39 | 54 | 101.10      | 226.90 |
| 650        | 664.0 | 945  | 850  | 24  | 48 | 60 | 147.60      | 311.60 |
| 700        | 715.0 | 995  | 900  | 24  | 48 | 64 | 168.00      | 370.90 |
| 750        | 766.0 | 1080 | 970  | 24  | 56 | 68 | 212.70      | 460.10 |
| 800        | 817.0 | 1140 | 1030 | 24  | 56 | 72 | 248.50      | 546.50 |
| 900        | 919.0 | 1250 | 1140 | 28  | 56 | 76 | 296.90      | 694.90 |
| 1000       | -     | -    | -    | -   | -  | -  | -           | -      |